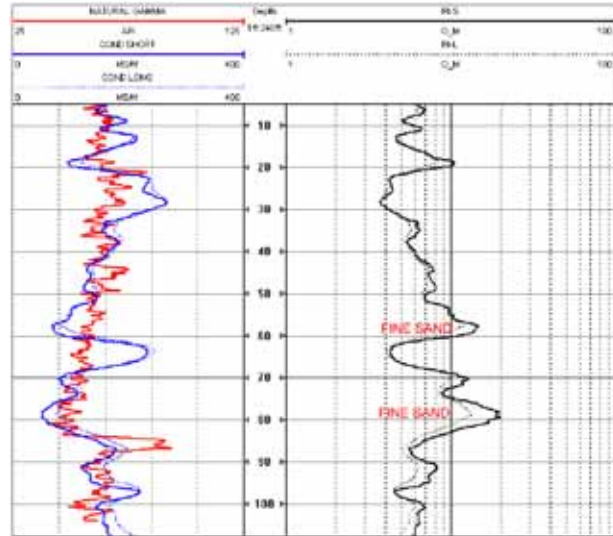


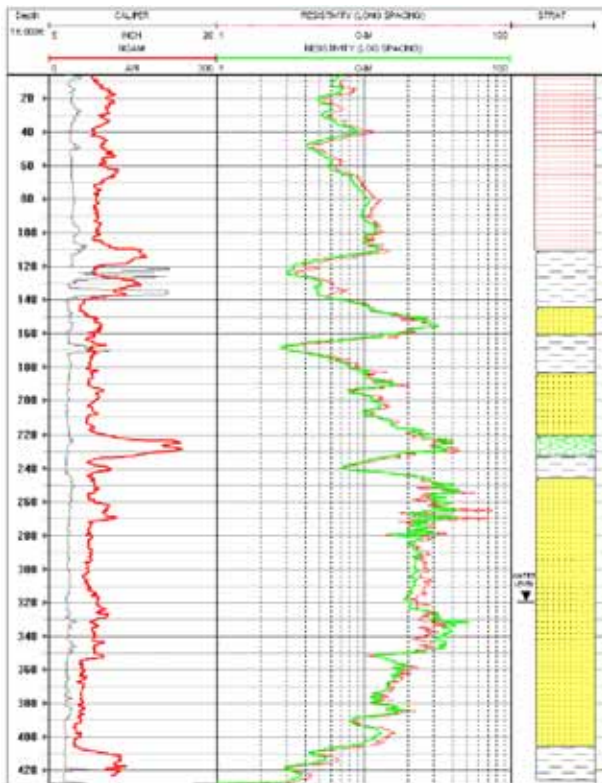
# Borehole Logging INDUCTION

Induction is a logging technique which measures apparent formation conductivity. The downhole tool broadcasts an electromagnetic signal which induces current loops to form in the surrounding soil or rock formations. The decay of the current loop produces a secondary magnetic field. The strength of this secondary field as a percentage of the tools reference (primary) magnetic field is a function of the conductivity of the surrounding geologic formations.

## INDUCTION LOGGING IN PVC-CASED WELL



## INDUCTION LOGGING IN AIR-FILLED OPEN BORING



A feature of the induction tool is that it can record conductivities in air-filled, water-filled or plastic-cased wells. For log display, induction conductivities are inverted into units of resistivity. Induction logs are principally used to delineated lithology and for stratigraphic correlation.