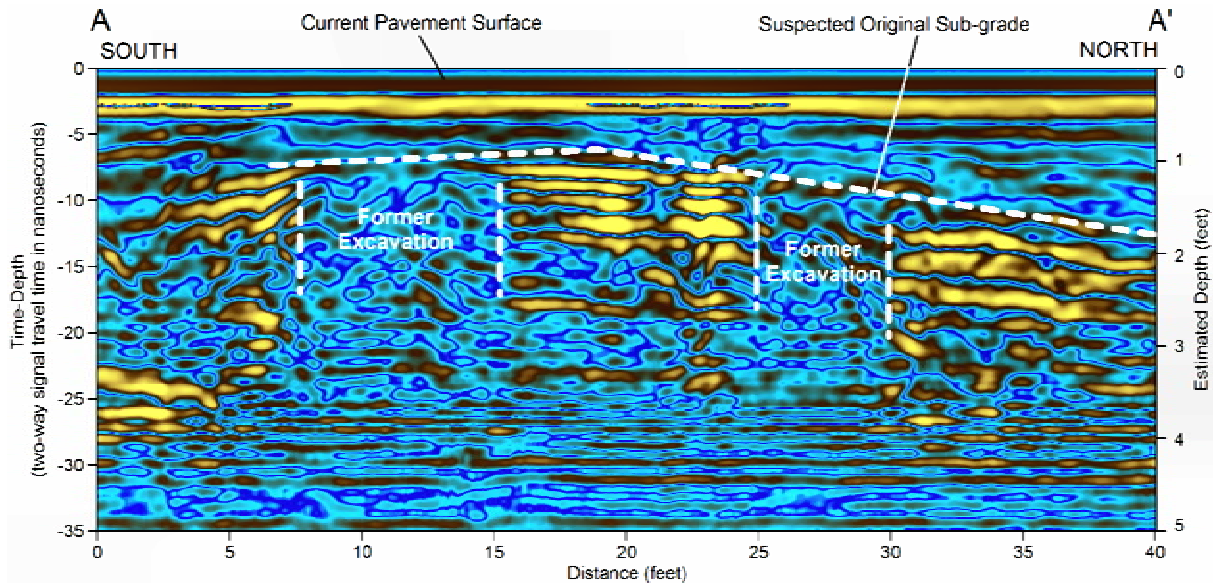


# GROUND PENETRATING RADAR



Ground penetrating radar (GPR) is sensitive to variations in the electrical properties of subsurface materials and provides a detailed electronic image of the shallow subsurface in real time. Surveys are nondestructive and noninvasive, not affected by nearby cultural features, and can be rapidly performed by one person in a variety of site conditions.



GPR surveys can be used to locate and determine the depth and/or approximate dimensions of:

- Utilities
- Underground storage tanks
- Buried debris
- Reinforcement in concrete
- Voids and cavities
- Former trenches and excavations
- Archeological and historical remains
- Shallow sediment and bedrock horizons